



## Bike St. Louis Phase III Information Sheet

**Full plan:** [bit.ly/BikeSTLPhaseIII](http://bit.ly/BikeSTLPhaseIII)

**Questions?** Elizabeth Simons      Maggie Crane  
314.932.4907                      314.622.4072  
[esimons@grgstl.org](mailto:esimons@grgstl.org)      [CraneM@stlouis-mo.gov](mailto:CraneM@stlouis-mo.gov)

### Who is Bike St. Louis?

The Bike St. Louis street bicycle network was developed in a partnership between:



An Advisory Committee including representatives from MoDOT, Metro, East West Gateway, Trailnet, bicycle shops and non-profits, and residents of the region guided the project planning and design.

### What is Bike St. Louis Phase III?

The first phase of Bike St. Louis started a decade ago, and much of the early striping and signs are now in need of upgrades. Bike St. Louis Phase III will add an additional 40 miles of street bike routes in the City of St. Louis and upgrade 60 miles of the existing network. Upgrades include additional wayfinding signage and seven bicycle parking corrals to be placed throughout the City. The types of bicycle routes that will be installed during Bike St. Louis Phase 3 include all the options you see on the right.

### Where is Bike St. Louis Phase III?

The bicycle routes installed as part of Bike St. Louis Phase III will be placed throughout the City of St. Louis. These new bicycle routes will connect with the existing Bike St. Louis network in St. Louis City, Clayton, and Maplewood.

### What is the installation timeline for Bike St. Louis Phase III?

This project begins in late summer 2014 and will be completed in spring 2015.

### How will the Bike St. Louis Phase III installation impact me?

Parking may be temporarily restricted in locations during Bike St. Louis Phase III installation. Some roads will go on "road diets" to accommodate bicycle facilities. "Road diets" can involve narrowing or reconfiguring lanes.

### Where is the funding for Bike St. Louis Phase III coming from?

Great Rivers Greenway and the City of St. Louis received a \$1.4 million federal transportation grant for Bike St. Louis Phase III. Great Rivers Greenway and the City of St. Louis are sharing the 20% local match funding required.

### Where can I get more information on Bike St. Louis Phase III?

More information including a map of the Bike St. Louis Phase III routes and descriptions of those route types is available at [bit.ly/BikeSTLPhaseIII](http://bit.ly/BikeSTLPhaseIII).

## Bike St. Louis Phase III Includes:



[www.pedbikeimages.com](http://www.pedbikeimages.com)  
LyubovZuyeva

Shared Lane Marking



[www.pedbikeimages.com](http://www.pedbikeimages.com)  
ElaineNelson

Bike Lane



[www.pedbikeimages.com](http://www.pedbikeimages.com)  
StevenFaust

Buffered Bike Lane



[www.pedbikeimages.com](http://www.pedbikeimages.com)  
DanBurden

Shared Use Path – biking, walking, etc.



[www.pedbikeimages.com](http://www.pedbikeimages.com)  
CarlSundstrom

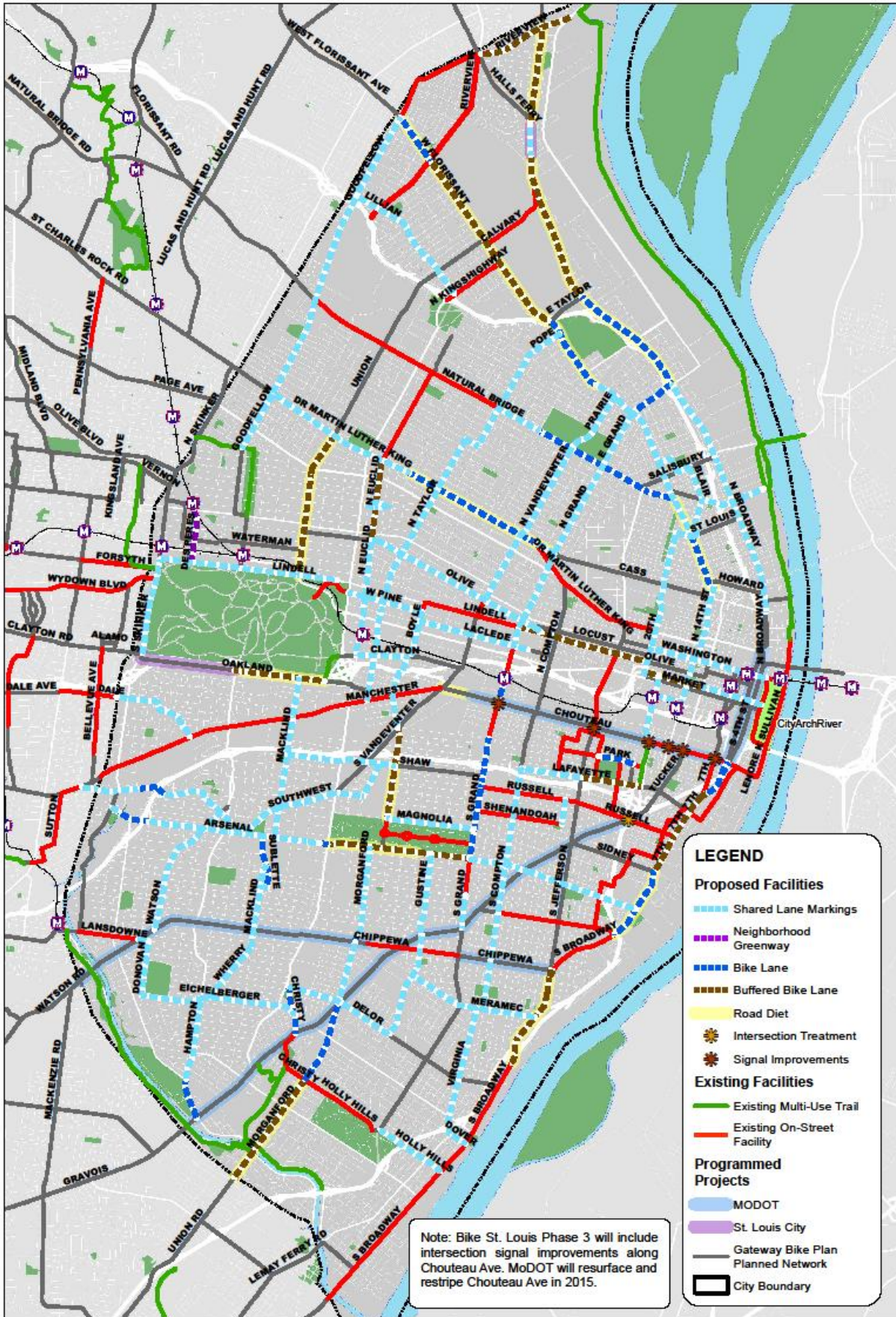
Bicycle Cut Through



[www.pedbikeimages.com](http://www.pedbikeimages.com)  
BradCrawford

Bike Corral – group of bike racks





## BIKE ST LOUIS PHASE 3 PROJECT - PROPOSED FACILITIES



Source: Data obtained from City of St. Louis, ESRI, and Great Rivers Greenway  
 Author: GSI, Urban Planning + Design  
 Date: March 2015

